

PSP24DA

DC POWER SUPPLY

Enclosed **Non-Isolated** Linear DC Power Supply, 24 Vac to 1.5-28 Vdc Adjustable Output



Output Current Ratings:

116 mA @ 10 Vdc
 125 mA @ 12 Vdc
 300 mA @ 24 Vdc

Input Current Rating:

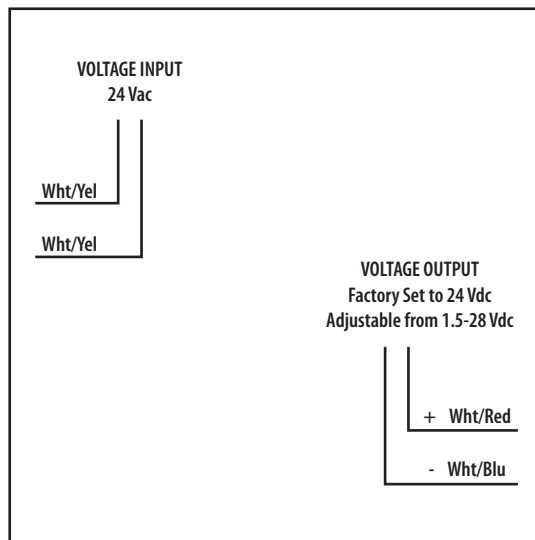
550 mA Maximum

Percent Ripple:

0.0016%, 24 Vdc @ 300 mA

Regulation:

Load: 0.04% No Load to Full Load
 Line: 0.0125 V/V



SPECIFICATIONS

Voltage Input: 24 Vac, full-wave rectified

Voltage Output: 1.5 - 28 Vdc **non-isolated**

Frequency: 50/60 Hz

Overload Protection: Electrical and Thermal, Auto-Reset

Operating Temperature: -30 to 140° F

Status: LED On = Activated

Dimensions: 2.30" x 3.20" x 1.80" with .50" NPT nipple

Wires: 16", 600V Rated

Weight: .30 lbs.

ON/OFF Switch: None

Approvals: Class II UL Listed, UL916, C-UL, CE

Notes:

» Requires a separate ungrounded transformer when used in conjunction with 1/2 wave rectified power supplies, grounded 24 Vac transformers, or when 24 Vac and 24 Vdc are connected in common.

NOTES