

RIB21CDC

DRY CONTACT RELAY

Enclosed Relay 10 Amp SPDT, Class 2 Dry Contact Input, 120-277 Vac Power



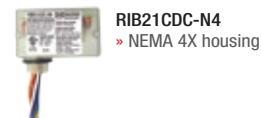
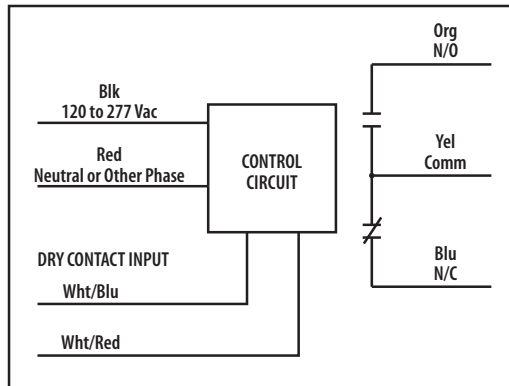
SPECIFICATIONS

- # Relays & Contact Type: One (1) SPDT Continuous Duty Coil
- Expected Relay Life: 10 million cycles minimum mechanical
- Operating Temperature: -30 to 140° F
- Relay Status: LED On = Activated
- Dimensions: 1.70" x 2.80" x 1.50" with .50" NPT Nipple
- Wires: 16", 600V Rated
- Approvals: UL Listed, UL916, C-UL
California State Fire Marshal, CE
- Housing Rating: Plenum, NEMA 1
- Gold Flash: No
- Override Switch: No

Contact Ratings:
 10 Amp General Use @ 277 Vac
 10 Amp Resistive @ 30 Vdc N/O
 7 Amp Resistive @ 30 Vdc N/C
 1/2 HP @ 125 Vac
 1 HP @ 250 Vac
 1/4 HP @ 277 Vac
 470 VA Pilot Duty @ 125 Vac
 770 VA Pilot Duty @ 250 Vac

Power Input:
 50 mA @ 240 Vac Max.

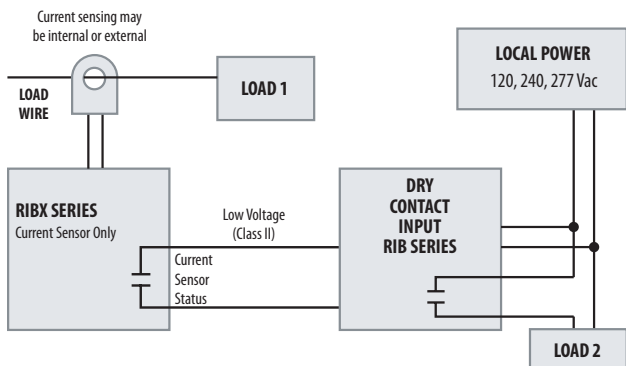
Notes:
 » Dry Contact Input Operation:
 Close White/Red wire to White/Blue wire to activate relay. If more than one DRY-CONTACT RIB shares a single dry-contact input, White/Blue must be common.



NOTES

INTERLOCKING LOADS (NO TRANSFORMER)

Self-powered Current Sensors of the RIBX Series and relays of the Dry Contact Input RIB Series may be applied to interlock Load 2 to Load 1.



DRY CONTACT INPUT

- RELAYS**
 RIB21CDC
 RIB01BDC
 RIB01SBDC
 RIB02BDC
 RIB02SBDC
 RIBM01ZNDC
 RIBM02ZNDC
 RIBM013PNDC
 RIBD01BDC (Time Delay)
 RIBD02BDC (Time Delay)

CURRENT SENSORS

- RIBXKF RIBXRF
 RIBXKTF RIBXRA
 RIBXKA RIBXJF
 RIBXKTA RIBXJA
 RIBXGA RIBMXF
 RIBXGF RIBMXA
 RIBXGTA RIBMXRF
 RIBXGTF RIBMXRA
 RIBXGFL RIBMXJF
 RIBXGFTL RIBMXJA
 RIBXF
 RIBXA