

CEILING FAN / LIGHT CONTROLLER



DESCRIPTION

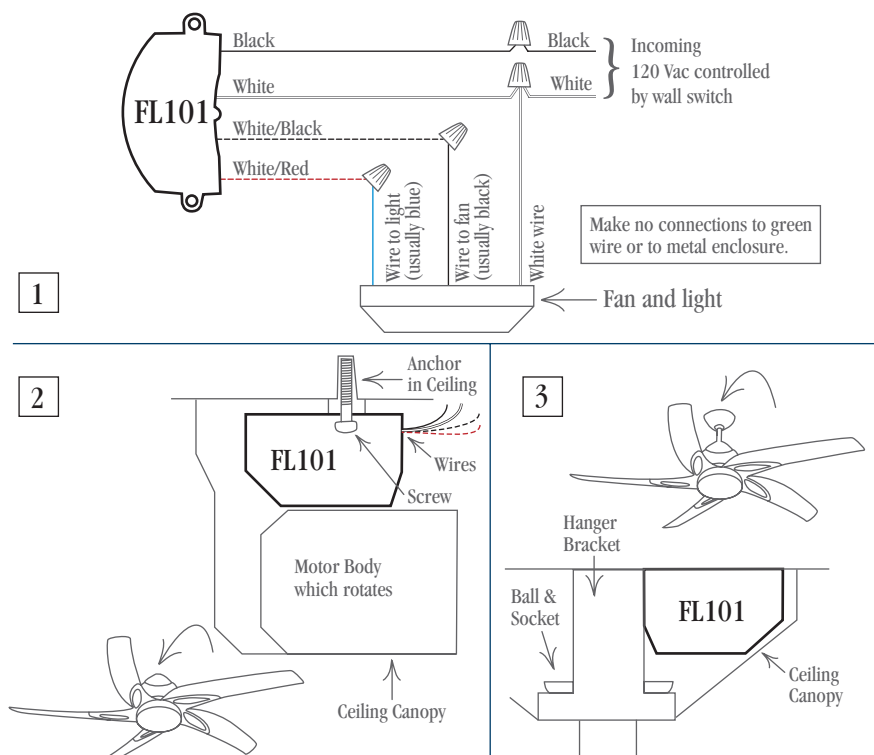
Most ceiling fans are installed at locations where only lights existed before, leaving only one wall switch and one 120 Vac line available to power the fan and light. Our Fan / Light Controller allows a ceiling fan and light to be controlled independently from one existing wall switch in a simple “OFF” and “ON” 3 stage sequence.

FEATURES

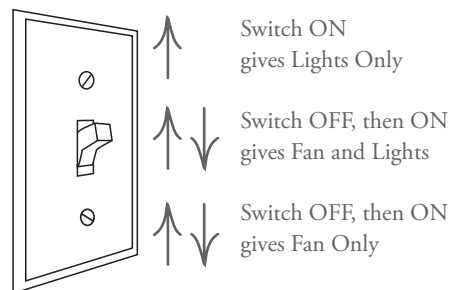
- Control fan and light independently from one wall switch
- Eliminates use of pull chains
- Installs easily in canopy of ceiling fan
- Requires no extra wiring between switch and ceiling fan and light
- Cannot be lost like a remote control unit
- 120 Vac
- Made in USA

SPECIFICATIONS

See reverse side.



OFF / ON SEQUENCE





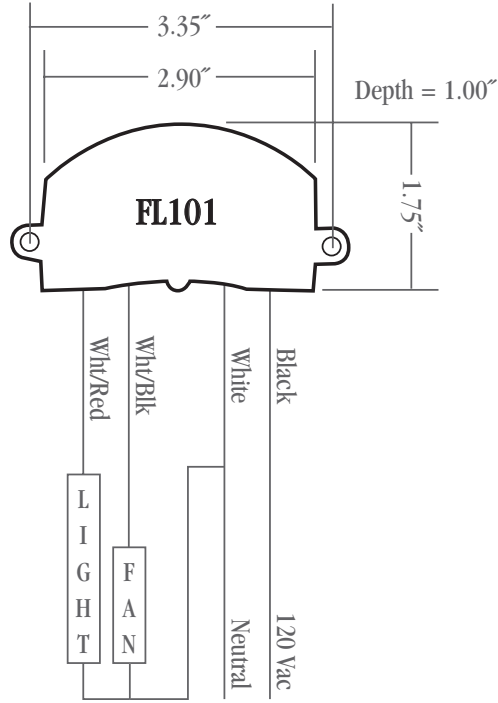
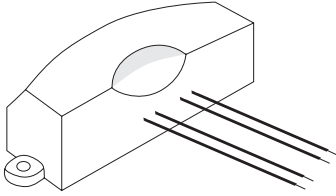
Functional Devices, Inc.
310 South Union Street
P.O. Box 368
Russiaville, IN 46979

Office 765.883.5538
Sales 800.888.5538
Fax 765.883.7505
Email sales@functionaldevices.com

FL101

CEILING FAN/LIGHT CONTROLLER

Independent Control for Ceiling Fan & Light from One Existing Wall Switch



■ SPECIFICATIONS

Input Power: 120 Vac, 60 Hz, 3 W

Contact Ratings: 360 W Light; 2 FLA, 12 LRA, 120 Vac Fan,
3 A Ballast

Operating Temperature: 32 to 140° F

Storage Temperature: -40 to 185° F

Humidity Range: 5 to 95% (noncondensing)

Dimensions: 3.75" x 1.75" x 1.00"

Weight: .20 lbs.

Wire Length: 6.50"

Approvals: UL Listed, C-UL, CSA Approved, CE

NOTES