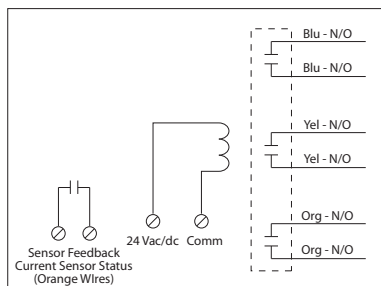


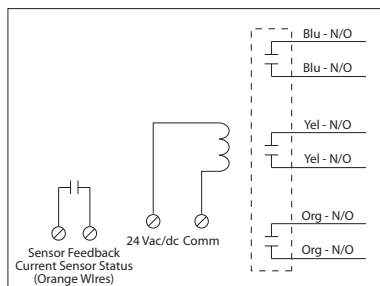
**RIBX243PF**

Enclosed Internal **Fixed** .50-20 Amp AC Sensor + Relay 20 Amp 3PST-N/O with 24 Vac/dc Coil

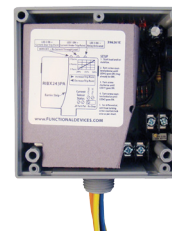
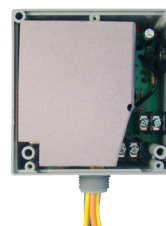


**RIBX243PA**

Enclosed Internal **Adjustable** .50-20 Amp AC Sensor + Relay 20 Amp 3PST-N/O with 24 Vac/dc Coil



**Relay & AC Sensor Combos**



Made in USA  
Meets  
"Buy American"  
of ARRA 2009

**Specifications**

- # Relays & Contact Type: One (1) 3PST Continuous Duty Coil
- Expected Relay Life: 10 million cycles minimum mechanical
- Operating Temperature: -30 to 140° F
- Humidity Range: 5 to 95% (noncondensing)
- Operate Time: 20mS
- Relay Status: Red LED On = Activated
- Dimensions: 4.00" x 4.00" x 1.80" with .50" NPT Nipple
- Wire Length: 16", 600V Rated
- Approvals: UL Listed, UL916, UL864, C-UL  
California State Fire Marshal, CE, RoHS
- Housing Rating: UL Accepted for Use in Plenum, NEMA 1
- Gold Flash: No
- Override Switch: No

**Coil Current:**  
210 mA @ 24 Vac  
154 mA @ 30 Vdc

**Coil Voltage Input:**  
24 Vac/dc ; 50-60 Hz  
Drop Out = 3 Vac / 3.8 Vdc  
Pull In = 20 Vac / 20 Vdc

- Contact Ratings:**
- 20 Amp Resistive @ 300 Vac, 28 Vdc
  - 20 Amp Ballast @ 277-480 Vac
  - 15 Amp Resistive @ 600 Vac
  - 770 VA Pilot Duty @ 120 Vac, 1 Phase
  - 1158 VA Pilot Duty @ 240 Vac, 1 Phase
  - 1110 VA Pilot Duty @ 277 Vac, 1 Phase
  - 1640 VA Pilot Duty @ 480 Vac, 1 Phase
  - 1466 VA Pilot Duty @ 240 Vac, 3 Phase
  - 2112 VA Pilot Duty @ 480 Vac, 3 Phase
  - Heavy Pilot Duty @ 600 Vac
  - 7.5 HP @ 480 Vac, 3 Phase
  - 5 HP @ 240 Vac, 3 Phase
  - 3 HP @ 480-600 Vac, 1 Phase
  - 2 HP @ 240-277 Vac, 1 Phase
  - 1 HP @ 120 Vac, 1 Phase

- Sensor Type:** Internal, with contact status  
Current sensing on orange wires
- Sensor Threshold:** Fixed, .5 Amps (RIBX243PF)  
Adjustable, .50-20 Amps (RIBX243PA)
- Sensor Range:** .50-20 Amps
- Sensor Output:** Solid State Contact 30 Vac/dc, 0.4 Amp

- Sensor Output:**
- Solid State Contact
  - 30 Vac/dc, .4 Amp Max.
  - When current sensor status is off (open), leakage <30 uA @ 30Vac/dc
  - When current sensor status is on (closed), voltage drop <.3 Vac/dc @ .1 Amp  
< 1.6 Vac/dc @ .4 Amp

- Notes:**
- Order Normally Closed by adding "-NC" to end of model number