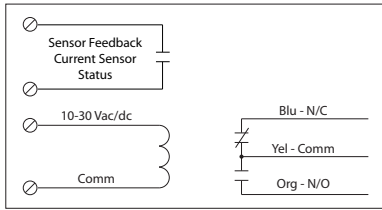


RIBXLC Series

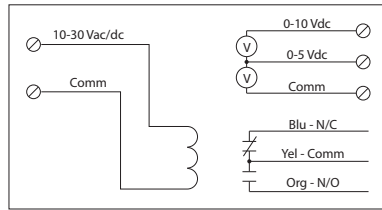
Enclosed Relay/AC Sensor Combinations, SPDT with 10-30 Vac/dc Coil

Relay & AC Sensor Combos

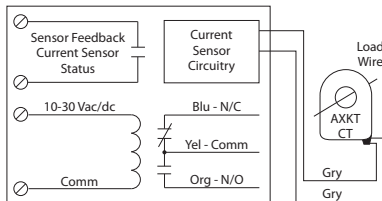
RIBXLC A, RIBXLC F, RIBXLC E A+



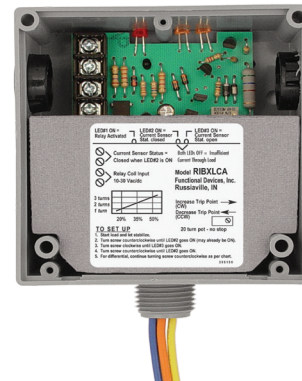
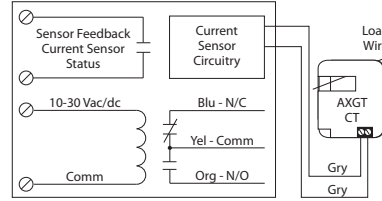
RIBXLC V, RIBXLC E V^



RIBXLC R A, RIBXLC R F+



RIBXLC J A, RIBXLC J F+



Made in USA
Meets
"Buy American"
of ARRA 2009

Specifications

- # Relays & Contact Type: One (1) SPDT Continuous Duty Coil
- Expected Relay Life: 10 million cycles minimum mechanical
- Operating Temperature: -30 to 140° F
- Humidity Range: 5 to 95% (noncondensing)
- Operate Time: 20mS
- Relay Status: Red LED On = Activated
- Dimensions: 4.00" x 4.00" x 1.80" with .50" NPT Nipple
- Wire Length: 16", 600V Rated
- Approvals: UL Listed, UL916, UL864, C-UL California State Fire Marshal, CE, RoHS
- Housing Rating: UL Accepted for Use in Plenum, NEMA 1
- Gold Flash: Yes
- Override Switch: No

- Coil Current:**
33 mA @ 10 Vac
35 mA @ 12 Vac
46 mA @ 24 Vac
55 mA @ 30 Vac
13 mA @ 10 Vdc
15 mA @ 12 Vdc
18 mA @ 24 Vdc
20 mA @ 30 Vdc
- Coil Voltage Input:**
10-30 Vac/dc ; 50-60 Hz
Drop Out = 2.1 Vac / 2.8 Vdc
Pull In = 9 Vac / 10 Vdc

- Sensor Output: +**
 - When current sensor status is off (open), leakage <30 uA @ 30Vac/dc
 - When current sensor status is on (closed), voltage drop < .3 Vac/dc @ .1 Amp
 - < 1.6 Vac/dc @ .4 Amp
- Sensor Output: ^**
 - Voltage output is proportional to current sensor range.
 - Min. Input Impedance = 30K ohms
 - Accuracy +/- 1% full scale
 - Ripple < 10m Vac

Notes:
• Models AXKT and AXGT CT remotes do not have contact closure circuitry and only work in conjunction with RIBXLCR and RIBXLCJ models, respectively.

RIBXLC Series Selection Guide							
Model#	Range	Type	Threshold	Sensor Output	Remote Style	Resistive	Contact Ratings
RIBXLCF	.50-10 Amps	Internal w/ contact status	Fixed, .50 Amp	Solid State Contact 30 Vac/dc, 0.4 Amp		10 Amp	10 Amp Resistive @ 120-277 Vac 10 Amp Resistive @ 28 Vdc 480 VA Pilot Duty @ 240-277 Vac
RIBXLC A	.50-10 Amps	Internal w/ contact status	Adjustable	Solid State Contact 30 Vac/dc, 0.4 Amp		10 Amp	480 VA Ballast @ 277 Vac 600 Watt Tungsten @ 120 Vac N/O 240 Watt Tungsten @ 120 Vac N/C 1/3 HP for N/O @ 120-240 Vac 1/6 HP for N/C @ 120-240 Vac
RIBXLC V	0-10 Amps	Internal w/ voltage output	Analog	0-5 Vdc 0-10 Vdc		10 Amp	
RIBXLCRF	1.25-150 Amps	External w/ contact status	Fixed, 1.25 Amp	Solid State Contact 30 Vac/dc, 0.4 Amp	Model AXKT: (Solid Core Remote CT)	10 Amp	1/4 HP for N/O @ 277 Vac 1/8 HP for N/C @ 277 Vac
RIBXLCRA	1.25-150 Amps	External w/ contact status	Adjustable	Solid State Contact 30 Vac/dc, 0.4 Amp	Model AXKT: (Solid Core Remote CT)	10 Amp	
RIBXLCJF	3-150 Amps	External w/ contact status	Fixed, 3 Amp	Solid State Contact 30 Vac/dc, 0.4 Amp	Model AXGT: (Split Core Remote CT)	10 Amp	
RIBXLCJ A	3-150 Amps	External w/ contact status	Adjustable	Solid State Contact 30 Vac/dc, 0.4 Amp	Model AXGT: (Split Core Remote CT)	10 Amp	
RIBXLC E A	.125-5 Amps	Internal w/ contact status	Adjustable	Solid State Contact 30 Vac/dc, 0.4 Amp		5 Amp	5 Amp Resistive @ 277 Vac 345 VA Pilot Duty @ 120/240 Vac N/O 268 VA Pilot Duty @ 277 Vac N/O 211 VA Pilot Duty @ 120/240 Vac N/C 175 VA Pilot Duty @ 277 Vac N/C 1/3 HP for N/O @ 120-240 Vac 1/6 HP for N/C @ 120-240 Vac 1/4 HP for N/O @ 277 Vac 1/8 HP for N/C @ 277 Vac
RIBXLC E V	0-5 Amps	Internal w/ voltage output	Analog	0-5 Vdc 0-10 Vdc		5 Amp	