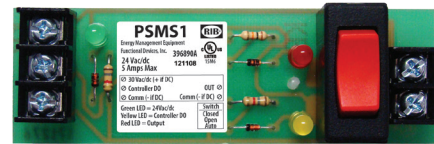
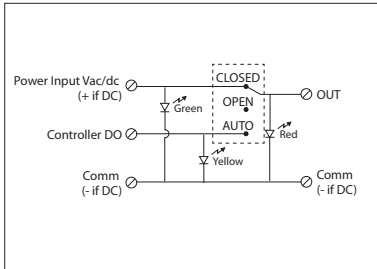


**PREPACKAGED SWITCH**

**PSMS1**

4.000" Track Mount Switch 5 Amp, 30 Vac/dc,  
3 Position Maintained



**SPECIFICATIONS**

**Operating Temperature:** -30 to 140° F

**Humidity Range:** 5 to 95% (noncondensing)

**Dimensions:** 1.275" x 4.000" x 1.750"

**Track Mount:** 4.000"

**MT4 Mounting Track Sold Separately**

**Switch Status:** Green LED On = Power Input present

Yellow LED On = Controller DO ON

Red LED On = Output Signal ON

**Approvals:** UL Listed, UL916, C-UL, CE, RoHS

**Switch Ratings:**

5 Amp @ 30 Vac/dc