

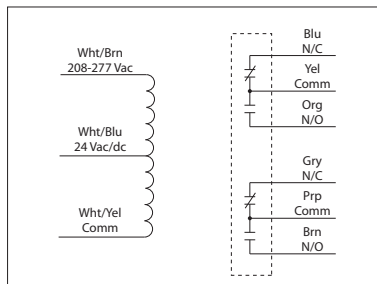
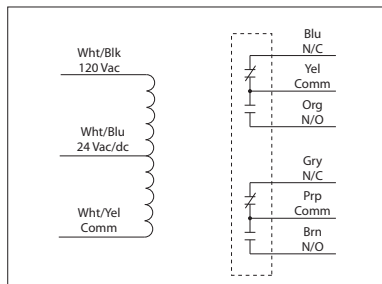
10 AMP PILOT CONTROL RELAYS

RIB2401D

Enclosed Relay 10 Amp DPDT with 24 Vac/dc/120 Vac Coil

RIB2402D

Enclosed Relay 10 Amp DPDT with 24 Vac/dc/208-277 Vac Coil



Made in USA Meets "Buy American" of ARRA 2009



RIB2401D-RD
RIB2402D-RD
• Red housing



RIB2401D-N4
RIB2402D-N4
• NEMA 4X housing, UL508 only

RELAYS

SPECIFICATIONS

- # Relays & Contact Type: One (1) DPDT Continuous Duty Coil
- Expected Relay Life: 10 million cycles minimum mechanical
- Operating Temperature: -30 to 140° F
- Humidity Range: 5 to 95% (noncondensing)
- Operate Time: 8ms
- Relay Status: LED On = Activated
- Dimensions: 1.70" x 2.80" x 1.50" with .50" NPT nipple
- Wires: 16", 600V Rated
- Approvals: UL Listed, UL916, UL864, C-UL California State Fire Marshal
- Housing Rating: UL Accepted for Use in Plenum, NEMA 1
- Gold Flash: No
- Override Switch: No

- Contact Ratings:**
- 10 Amp Resistive @ 30 Vdc
 - 10 Amp General Use @ 277 Vac
 - 1/2 HP @ 120/240 Vac (N/O)
 - 1/3 HP @ 120/240 Vac (N/C)
 - B300 Pilot Duty
 - 120 Vac 30A Make 3A Break (360 VA)
 - 240 Vac 15 A Make 1.5A Break (360 VA)
 - 208 Vac 17.3A Make 1.73A Break (360 VA)
 - 277 Vac 13A Make 1.3A Break (360 VA)
 - 24 Vac 30A Make 5A Break (120VA) 5A Max

- Coil Current:**
- 24 mA @ 18 Vac 20 mA @ 20 Vdc
 - 32 mA @ 24 Vac 24 mA @ 24 Vdc
 - 40 mA @ 30 Vac 36 mA @ 30 Vdc
 - 31 mA @ 120 Vac (RIB2401D)
 - 36 mA @ 208-277 Vac (RIB2402D)
- Coil Voltage Input:**
- 24 Vac/dc ; 120 Vac ; 50-60 Hz (RIB2401D)
 - 24 Vac/dc ; 208-277 Vac ; 50-60 Hz (RIB2402D)
 - Drop Out = 3 Vac / 3.8 Vdc
 - Pull In = 18 Vac / 20 Vdc