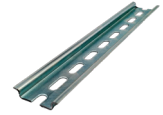
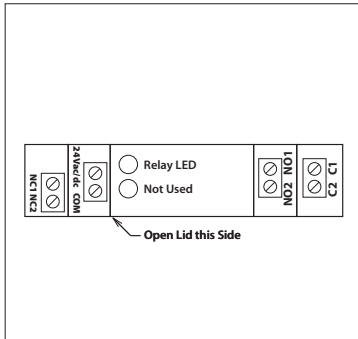


**10 AMP PILOT CONTROL RELAYS**

**RIBR24D**

DIN Mount Relay 10 Amp DPDT with 24 Vac/dc Coil



**ADIN35**  
DIN Rail Perforated  
35mm x 7.5mm x 1m



**ADIN35ES**  
Pair of End Stops  
for 35mm DIN Rail

**Models ADIN35 and ADIN35ES sold separately. See data sheet on website for more product information.**

**Specifications**

- # Relays & Contact Type:** One (1) DPDT Continuous Duty Coil
- Expected Relay Life:** 10 million cycles minimum mechanical
- Operating Temperature:** -30 to 140° F
- Humidity Range:** 5 to 95% (noncondensing)
- Operate Time:** 8mS
- Relay Status:** LED On = Activated
- Dimensions:** 3.88" x 2.76" x 0.78"
- Terminal Strip:** 14-22 AWG wire
- Approvals:** UL Listed, UL916, C-UL, CE, RoHS
- Replacement Relay:** AR24D
- Accessories:** ADIN35, ADIN35ES

- Contact Ratings:**
  - 10 Amp Resistive @ 30 Vdc
  - 10 Amp General Use @ 277 Vac
  - 1/2 HP @ 120-240 Vac (N/O)
  - 1/3 HP @ 120-240 Vac (N/C)
- B300 Pilot Duty**
  - 120Vac 30A Make 3A Break (360 VA)
  - 240Vac 15A Make 1.5A Break (360 VA)
  - 208Vac 17.3A Make 1.73A Break (360 VA)
  - 277Vac 13A Make 1.3A Break (360 VA)
  - 24Vac 30A Make 5A Break (120VA) 5A Max

- Power and Control Current:**
  - 24 mA @ 18 Vac
  - 20 mA @ 20 Vdc
  - 32 mA @ 24 Vac
  - 24 mA @ 24 Vdc
  - 40 mA @ 30 Vac
  - 36 mA @ 24 Vdc

- Coil Voltage Input:**
  - 24 Vac/dc ; 50-60 Hz
  - Drop Out = 3 Vac / 3.8 Vdc
  - Pull In = 18 Vac / 20 Vdc