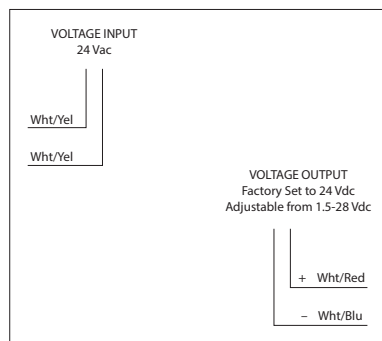


DC POWER SUPPLY: 24 VAC TO 1.5 - 28 VDC

PSP24DA

DC Power Supply, Non-Isolated Linear, 24 Vac to 1.5-28 Vdc, Adjustable Output, NEMA 1 Housing



SPECIFICATIONS

Voltage Input: 24 Vac, full-wave rectified
Voltage Output: 1.5 - 28 Vdc **non-isolated**
Frequency: 50/60 Hz
Overload Protection: Electrical and Thermal, Auto-Reset
Operating Temperature: -30 to 140° F
Humidity Range: 5 to 95% (noncondensing)
Power Status: LED On = Activated
Dimensions: 2.39"H x 3.31"W x 1.81"D with 0.50"NPT nipple
Housing Detail: See **Housing B** in housing guide for dimensions
Origin: Made of US and non-US parts
Wires: 16", 600V Rated
ON/OFF Switch: None
Approvals: Class 2 (UL Approved UL5085-3), UL916, C-UL, CE, RoHS
Housing Rating: UL Accepted for Use in Plenum, NEMA 1

Output Current Ratings:
 116 mA @ 10 Vdc
 125 mA @ 12 Vdc
 300 mA @ 24 Vdc

Input Current Rating:
 550 mA Maximum

Percent Ripple:
 0.0016%, 24 Vdc @ 300 mA

Regulation:
 Load: 0.04% No Load to Full Load
 Line: 0.0125 V/V

Notes:
 • Requires a separate ungrounded transformer when used in conjunction with 1/2 wave rectified power supplies, grounded 24 Vac transformers, or when 24 Vac and 24 Vdc are connected in common.