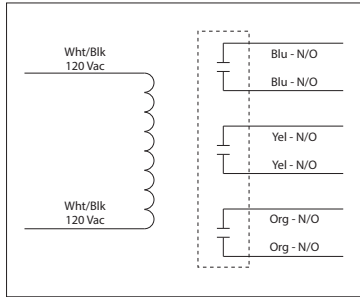


20 AMP POWER CONTROL RELAYS

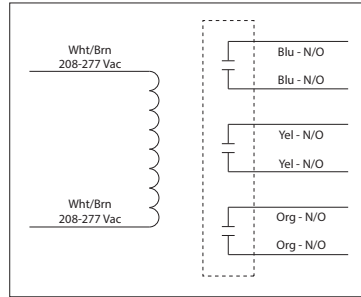
RIB013P

Power Relay, 20 Amp, 3PST-N/O,
120 Vac Coil, NEMA 1 Housing



RIB023P

Power Relay, 20 Amp, 3PST-N/O,
208-277 Vac Coil, NEMA 1 Housing



SPECIFICATIONS

Relays & Contact Type: One (1) 3PST Continuous Duty Coil
Expected Relay Life: 10 million cycles minimum mechanical
Operating Temperature: -30 to 140° F
Humidity Range: 5 to 95% (noncondensing)
Operate Time: 20ms
Relay Status: LED On = Activated
Dimensions: 4.000"H x 4.000"W x 1.810"D with .50" NPT Nipple
Housing Detail: See **Housing C** in housing guide for dimensions
Origin: Made of US and non-US parts
Wires: 16", 600V Rated
Approvals: UL Listed, UL916, UL864, C-UL
 California State Fire Marshal, CE, RoHS
Housing Rating: UL Accepted for Use in Plenum, NEMA 1
Gold Flash: No
Override Switch: No

Contact Ratings:
 20 Amp Resistive @ 300 Vac, 28 Vdc
 20 Amp Ballast @ 277-480 Vac
 Not rated for Electronic Ballast
 15 Amp Resistive @ 600 Vac
 770 VA Pilot Duty @ 120 Vac, 1 Phase
 1,158 VA Pilot Duty @ 240 Vac, 1 Phase
 1,110 VA Pilot Duty @ 277 Vac, 1 Phase
 1,640 VA Pilot Duty @ 480 Vac, 1 Phase
 1,466 VA Pilot Duty @ 240 Vac, 3 Phase
 2,112 VA Pilot Duty @ 480 Vac, 3 Phase
 Heavy Pilot Duty @ 600 Vac
 7.5 HP @ 480 Vac, 3 Phase
 5 HP @ 240 Vac, 3 Phase
 3 HP @ 480-600 Vac, 1 Phase
 2 HP @ 240-277 Vac, 1 Phase
 1 HP @ 120 Vac, 1 Phase

Coil Current:
 154 mA @ 120 Vac (RIB013P)
 187 mA @ 208-277 Vac (RIB023P)

Coil Voltage Input:
 RIB013P
 120 Vac ; 50-60 Hz
 Drop Out = 35 Vac
 Pull In = 85 Vac

RIB023P
 208-277 Vac ; 50-60 Hz
 Drop Out = 60 Vac
 Pull In = 160 Vac

Notes:
 • Order Normally Closed by adding
 "-NC" to end of model number