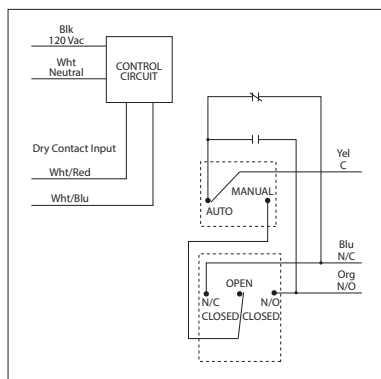


DRY CONTACT INPUT RELAYS

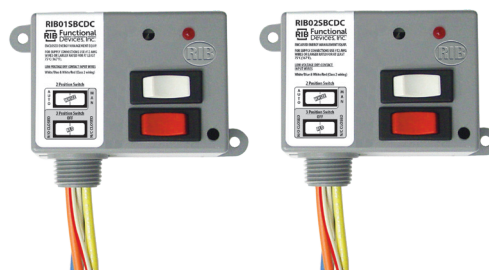
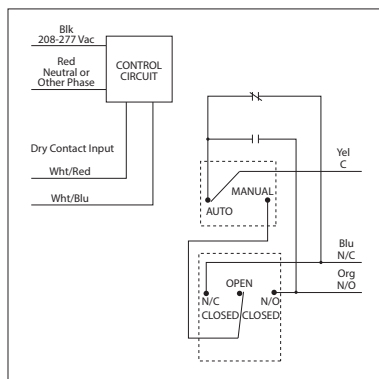
RIB01SBCDC

Dry Contact Relay, 20 Amp SPDT + Override,
 Class 2 Dry Contact Input, 120 Vac Power Input,
 NEMA 1 Housing



RIB02SBCDC

Dry Contact Relay, 20 Amp SPDT + Override,
 Class 2 Dry Contact Input, 208-277 Vac Power Input,
 Input, NEMA 1 Housing



SPECIFICATIONS

Relays & Contact Type: One (1) SPDT Continuous Duty Coil

Expected Relay Life: 10 million cycles minimum mechanical

Operating Temperature: -30 to 140° F

Humidity Range: 5 to 95% (noncondensing)

Operate Time: 1.8 Seconds

Relay Status: LED On = Activated

Dimensions: 2.39"H x 3.31"W x 1.81"D with 0.50"NPT nipple

Housing Detail: See **Housing B** in housing guide for dimensions

Origin: Made of US and non-US parts

Wires: 16", 600V Rated

Approvals: UL Listed, UL916, C-UL, CE, RoHS

Housing Rating: UL Accepted for Use in Plenum, NEMA 1

Gold Flash: No

Override Switch: Yes (2)

Contact Ratings:

20 Amp Resistive @ 277 Vac

20 Amp Ballast @ 277 Vac

Not rated for Electronic Ballast

10 Amp Tungsten @ 120 Vac

770 VA Pilot Duty @ 120 Vac

1,110 VA Pilot Duty @ 277 Vac

2 HP @ 277 Vac

1 HP @ 120 Vac

Power Input:

42 mA @ 120 Vac (RIB01SBCDC)

62 mA @ 208-277 Vac (RIB02SBCDC)

Notes:

• Dry Contact Input Operation:

Close White/Red wire to White/Blue wire to activate relay. If more than one dry contact RIB[®] shares a single dry contact input, White/Blue must be common.