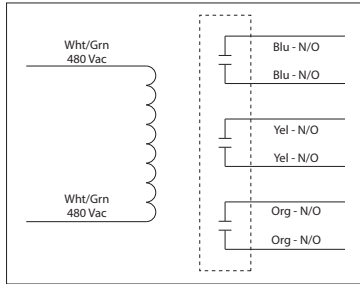


## 20 AMP POWER CONTROL RELAYS

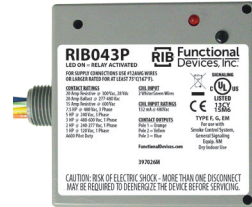
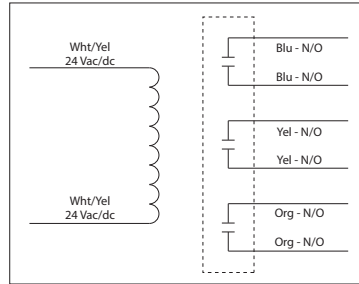
### RIB043P

Power Relay, 20 Amp 3PST-N/O, 480 Vac Coil, NEMA 1 Housing



### RIB243P

Power Relay, 20 Amp 3PST-N/O, 24 Vac/dc Coil, NEMA 1 Housing



## SPECIFICATIONS

- # Relays & Contact Type:** One (1) 3PST Continuous Duty Coil
- Expected Relay Life:** 10 million cycles minimum mechanical
- Operating Temperature:** -30 to 140° F
- Humidity Range:** 5 to 95% (noncondensing)
- Operate Time:** 20ms
- Relay Status:** LED On = Activated
- Dimensions:** 4.000" H x 4.000" W x 1.810" D with .50" NPT Nipple
- Housing Detail:** See **Housing C** in housing guide for dimensions
- Origin:** Made of US and non-US parts
- Wires:** 16", 600V Rated
- Approvals:** UL Listed, UL916, C-UL, CE, RoHS (Both Models)  
UL864, California State Fire Marshal (RIB043P)
- Housing Rating:** UL Accepted for Use in Plenum, NEMA 1
- Gold Flash:** No
- Override Switch:** No

- Contact Ratings:**
  - 20 Amp Resistive @ 300 Vac, 28 Vdc
  - 20 Amp Ballast @ 277-480 Vac
  - Not rated for Electronic Ballast
  - 15 Amp Resistive @ 600 Vac
  - 770 VA Pilot Duty @ 120 Vac, 1 Phase
  - 1,158 VA Pilot Duty @ 240 Vac, 1 Phase
  - 1,110 VA Pilot Duty @ 277 Vac, 1 Phase
  - 1,640 VA Pilot Duty @ 480 Vac, 1 Phase
  - 1,466 VA Pilot Duty @ 240 Vac, 3 Phase
  - 2,112 VA Pilot Duty @ 480 Vac, 3 Phase
  - Heavy Pilot Duty @ 600 Vac
  - 7.5 HP @ 480 Vac, 3 Phase
  - 5 HP @ 240 Vac, 3 Phase
  - 3 HP @ 480-600 Vac, 1 Phase
  - 2 HP @ 240-277 Vac, 1 Phase
  - 1 HP @ 120 Vac, 1 Phase

- Coil Current:**
  - 132 mA @ 480 Vac (RIB043P)
  - 210 mA @ 24 Vac (RIB243P)
  - 154 mA @ 30 Vdc (RIB243P)

- Coil Voltage Input:**
  - RIB043P
  - 480 Vac ; 50-60 Hz
  - Drop Out = 140 Vac
  - Pull In = 340 Vac

- RIB243P**
  - 24 Vac/dc ; 50-60 Hz
  - Drop Out = 3 Vac / 3.8 Vdc
  - Pull In = 20 Vac / 22 Vdc

- Notes:**
  - Order Normally Closed by adding "-NC" to end of model number