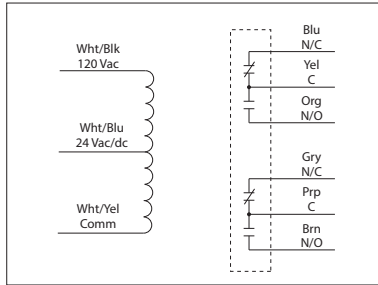


10 AMP PILOT CONTROL RELAYS

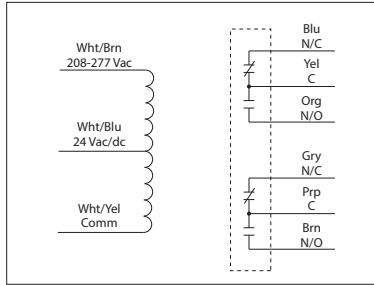
RIB2401D

Pilot Relay, 10 Amp DPDT, 24 Vac/dc/
 120 Vac Coil, NEMA 1 Housing



RIB2402D

Pilot Relay, 10 Amp DPDT, 24 Vac/dc/
 208-277 Vac Coil, NEMA 1 Housing



SPECIFICATIONS

- # Relays & Contact Type: One (1) DPDT Continuous Duty Coil
- Expected Relay Life: 10 million cycles minimum mechanical
- Operating Temperature: -30 to 140° F
- Humidity Range: 5 to 95% (noncondensing)
- Operate Time: 8ms
- Relay Status: LED On = Activated
- Dimensions: 1.70"H x 2.80"W x 1.50"D with 0.50" NPT nipple
- Housing Detail: See **Housing A** in housing guide for dimensions
- Origin: Made of US and non-US parts
- Wires: 16", 600V Rated
- Approvals: UL Listed, C-UL, CE, RoHS (All models)
 UL916 (RIB2401D, RIB2401D-RD, RIB2402D, RIB2402D-RD)
 UL864, California State Fire Marshal (RIB2401D-RD, RIB2402D-RD)
 UL508 (RIB2401D-N4, RIB2402D-N4)
- Housing Rating: UL Accepted for Use in Plenum, NEMA 1
- Gold Flash: No
- Override Switch: No

Contact Ratings:

- 10 Amp Resistive @ 30 Vdc
- 10 Amp General Use @ 277 Vac
- 1/2 HP @ 120/240 Vac (N/O)
- 1/3 HP @ 120/240 Vac (N/C)
- B300 Pilot Duty
 - 120 Vac 30A Make 3A Break (360 VA)
 - 240 Vac 15 A Make 1.5A Break (360 VA)
 - 208 Vac 17.3A Make 1.73A Break (360 VA)
 - 277 Vac 13A Make 1.3A Break (360 VA)
 - 24 Vac 30A Make 5A Break (120VA) 5A Max

Coil Current:

- 24 mA @ 18 Vac
- 32 mA @ 24 Vac
- 40 mA @ 30 Vac
- 31 mA @ 120 Vac (RIB2401D)
- 36 mA @ 208-277 Vac (RIB2402D)
- 20 mA @ 20 Vdc
- 24 mA @ 24 Vdc
- 36 mA @ 30 Vdc

Coil Voltage Input:

- 24 Vac/dc ; 120 Vac ; 50-60 Hz (RIB2401D)
- 24 Vac/dc ; 208-277 Vac ; 50-60 Hz (RIB2402D)
- Drop Out = 3 Vac / 3.8 Vdc
- Pull In = 18 Vac / 20 Vdc