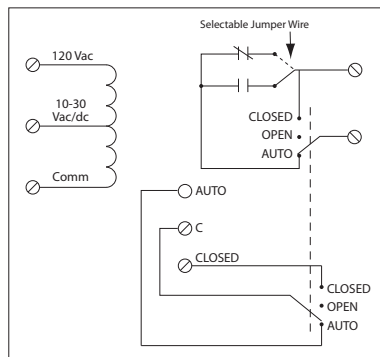


15 AMP PILOT CONTROL TRACK MOUNT RELAYS

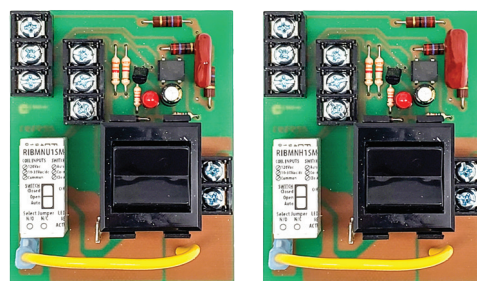
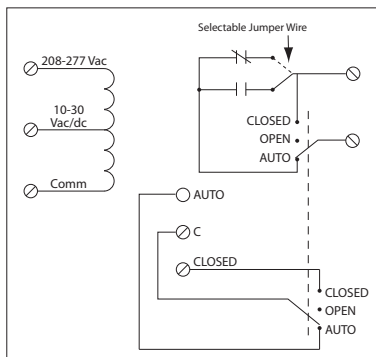
RIBMNU1SM-250

Pilot Relay, 15 Amp SPST + Override + Monitor, 10-30 Vac/dc/120 Vac Coil, 2.75" Track Mount



RIBMNH1SM-250

Pilot Relay, 15 Amp SPST + Override + Monitor, 10-30 Vac/dc/208-277 Vac Coil, 2.75" Track Mount



SPECIFICATIONS

Relays & Contact Type: One (1) SPST Continuous Duty Coil
Expected Relay Life: 10 million cycles minimum mechanical
Operating Temperature: -30 to 140° F
Humidity Range: 5 to 95% (noncondensing)
Operate Time: 20ms
Relay Status: LED On = Activated
Dimensions: 3.38"H x 2.75"W x 1.38"D1/1.88"D2
Housing Detail: See **Housing H** in housing guide for dimensions
Origin: Made of US and non-US parts
Track Mount: 2.750"
MT212 Mounting Track Sold Separately
Approvals: UL Listed, UL916, UL864, C-UL
 California State Fire Marshal, CE, RoHS
Gold Flash: Yes
Override Switch: Yes (with Monitor)

Contact Ratings:

15 Amp Resistive @ 125 Vac
 10 Amp Resistive @ 250 Vac
 345 VA Pilot Duty @ 120/240 Vac (N/O)
 211 VA Pilot Duty @ 120/240 Vac (N/C)
 1/3 HP @ 120-240 Vac (N/O)
 1/6 HP @ 120-240 Vac (N/C)

Notes:

- Normally Open or Normally Closed selected by yellow jumper wire
- Second pole of override switch can be connected to digital-in of controller to report position of override switch
- Rating of second pole is 50 Vac/dc, 0.25 Amp max

Coil Current:

33 mA @ 10 Vac
 35 mA @ 12 Vac
 46 mA @ 24 Vac
 55 mA @ 30 Vac
 28 mA @ 120 Vac (RIBMNU1SM-250)
 39 mA @ 208-277 Vac (RIBMNH1SM-250)

Coil Voltage Input:

10-30 Vac/dc; 120 Vac; 50-60 Hz (RIBMNU1SM-250)
 10-30 Vac/dc; 208-277 Vac; 50-60 Hz (RIBMNH1SM-250)
 Drop Out = 2.1 Vac / 2.8 Vdc
 Pull In = 9 Vac / 10 Vdc