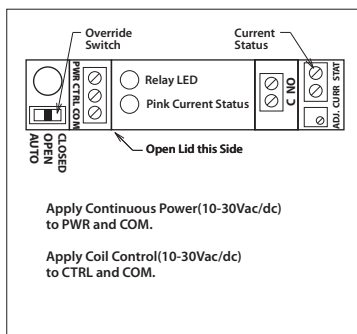
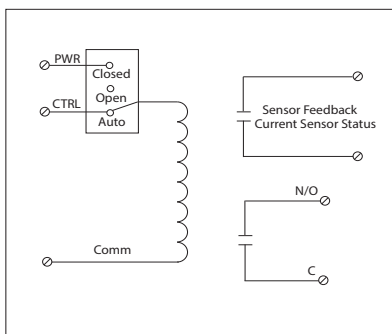


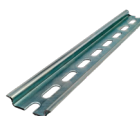
## DIN MOUNT RELAY & AC CURRENT SWITCH COMBO

### RIBRXLSA

Current Switch and Relay Combination, 10 Amp SPST-N/O + Coil  
 Side Override, 10-30 Vac/dc Coil, Adjustable, 0.25-10 Amp



**ADIN35ES**  
 Pair of End Stops  
 for 35mm DIN Rail



**ADIN35**  
 DIN Rail Perforated  
 35mm x 7.5mm x 1m



**Models**  
**ADIN35 and ADIN35ES**  
 sold separately. See data  
 sheet on website for more  
 product information.

## SPECIFICATIONS

**# Relays & Contact Type:** One (1) SPST Continuous Duty Coil  
**Expected Relay Life:** 10 million cycles minimum mechanical  
**Operating Temperature:** -30 to 140° F  
**Humidity Range:** 5 to 95% (noncondensing)  
**Operate Time:** 20ms  
**Relay Status:** LED On = Activated  
**Dimensions:** 2.76"H x 3.88"W x 0.78"D  
**Housing Detail:** See **Housing K** in housing guide for dimensions  
**Origin:** Made of US and non-US parts  
**Terminal Strip:** 14-22 AWG wire  
**Approvals:** UL Listed, UL916, C-UL, CE, RoHS  
**Gold Flash:** Yes  
**Sensing Range:** .25 - 10A  
**Replacement Relay:** ARL1C  
**Accessories:** ADIN35, ADIN35ES

**Contact Ratings:**  
 10 Amp Resistive @ 277 Vac  
 10 Amp Resistive @ 28 Vdc  
 480 VA Pilot Duty @ 240/277 Vac  
 480 VA Ballast @ 277 Vac  
 Not rated for Electronic Ballast  
 600 Watt Tungsten @ 120 Vac  
 1/3 HP @ 120-240 Vac  
 1/4 HP @ 277 Vac

**Power and Control Voltage:**  
 10-30 Vac/dc ; 50-60 Hz  
 Drop Out = 2.1 Vac / 2.8 Vdc  
 Pull In = 9 Vac / 10 Vdc

**Coil Current:**  
 33 mA @ 10 Vac 13 mA @ 10 Vdc  
 35 mA @ 12 Vac 15 mA @ 12 Vdc  
 46 mA @ 24 Vac 18 mA @ 24 Vdc  
 55 mA @ 30 Vac 20 mA @ 30 Vdc

**Sensor Contact:**  
 Solid State Contact  
 30Vac/dc, 0.1A Max.

- When current sensor status is off (open), leakage <30 uA @ 30Vac/dc
- When current sensor status is on (closed), voltage drop < .3 Vac/dc @ .1 Amp