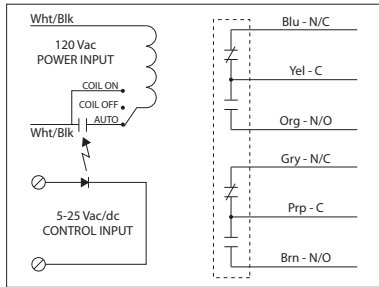


## LOW COIL INPUT RELAYS

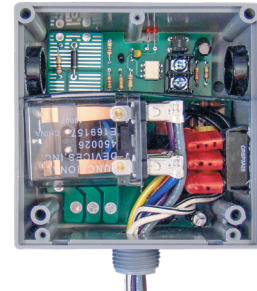
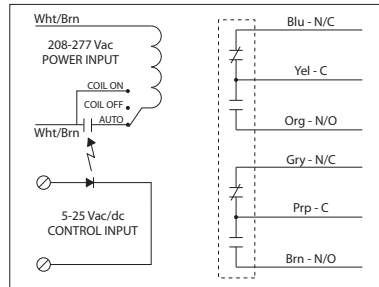
### RIBTE01P-S

Low Input/Optoisolated Relay, 20 Amp DPDT + Override, 120 Vac Power Input, 5-25 Vac/dc Control Input, Hi/Lo Voltage Separation, NEMA 1 Housing



### RIBTE02P-S

Low Input/Optoisolated Relay, 20 Amp DPDT + Override, 208-277 Vac Power Input, 5-25 Vac/dc Control Input, Hi/Lo Voltage Separation, NEMA 1 Housing



## SPECIFICATIONS

**Power Input:** 120 Vac, 50-60 Hz (RIBTE01P-S)  
 208-277 Vac, 50-60 Hz (RIBTE02P-S)

**Control Input:** 5-25 Vac/dc, 50-60 Hz

**# Relays & Contact Type:** One (1) DPDT Continuous Duty Coil

**Expected Relay Life:** 10 million cycles minimum mechanical

**Operating Temperature:** -30 to 140° F

**Humidity Range:** 5 to 95% (noncondensing)

**Operate Time:** 18ms

**Relay Status:** LED On = Activated

**Dimensions:** 4.00"H x 4.00"W x 1.81"D with 0.50" NPT nipple

**Housing Detail:** See **Housing C** in housing guide for dimensions

**Origin:** Made of US and non-US parts

**Wires:** 16", 600V Rated

**Approvals:** UL Listed, UL916, C-UL, CE, RoHS

**Housing Rating:** UL Accepted for Use in Plenum, NEMA 1

**Gold Flash:** Yes

**Override Switch:** Yes\*

**Contact Ratings:**

20 Amp Resistive @ 300 Vac  
 20 Amp Resistive @ 28 Vdc  
 15 Amp Resistive @ 600 Vac  
 20 Amp Ballast @ 277-480 Vac

*Not rated for Electronic Ballast*

770 VA Pilot Duty @ 120 Vac  
 1158 VA Pilot Duty @ 240 Vac  
 1110 VA Pilot Duty @ 277 Vac  
 1640 VA Pilot Duty @ 480 Vac

3 HP @ 480-600 Vac  
 2 HP @ 240-277 Vac  
 1 HP @ 120 Vac

**Power Input Ratings:**

105 mA @ 120 Vac (RIBTE01P-S)  
 105 mA @ 208-277 Vac (RIBTE02P-S)

**Control Input Ratings:**

.4 mA @ 5 Vdc  
 .9 mA @ 10 Vdc  
 1 mA @ 12 Vdc  
 2 mA @ 24 Vdc  
 3 mA @ 24 Vac  
 (Non Polarized)

**Notes:**

Override capability is made possible by supplying constant voltage on the Power Input. No Control Input Voltage is necessary to override the relay.\*