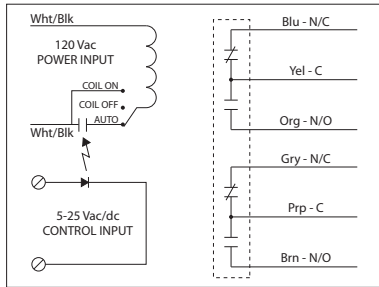


LOW COIL INPUT RELAYS

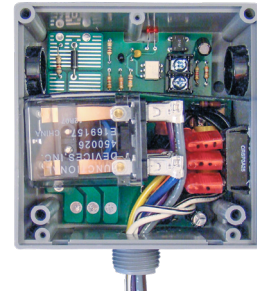
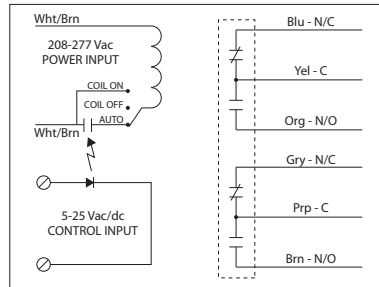
RIBTE01P-S

Low Input/Optoisolated Relay, 20 Amp DPDT + Override, 120 Vac Power Input, 5-25 Vac/dc Control Input, Hi/Lo Voltage Separation, NEMA 1 Housing



RIBTE02P-S

Low Input/Optoisolated Relay, 20 Amp DPDT + Override, 208-277 Vac Power Input, 5-25 Vac/dc Control Input, Hi/Lo Voltage Separation, NEMA 1 Housing



SPECIFICATIONS

Power Input: 120 Vac, 50-60 Hz (RIBTE01P-S)
 208-277 Vac, 50-60 Hz (RIBTE02P-S)

Control Input: 5-25 Vac/dc, 50-60 Hz

Relays & Contact Type: One (1) DPDT Continuous Duty Coil

Expected Relay Life: 10 million cycles minimum mechanical

Operating Temperature: -30 to 140° F

Humidity Range: 5 to 95% (noncondensing)

Operate Time: 18ms

Relay Status: LED On = Activated

Dimensions: 4.00"H x 4.00"W x 1.81"D with 0.50" NPT nipple

Housing Detail: See **Housing C** in housing guide for dimensions

Origin: Made of US and non-US parts

Wires: 16", 600V Rated

Approvals: UL Listed, UL916, C-UL, CE, RoHS

Housing Rating: UL Accepted for Use in Plenum, NEMA 1

Gold Flash: Yes

Override Switch: Yes*

Contact Ratings:

- 20 Amp Resistive @ 300 Vac
- 20 Amp Resistive @ 28 Vdc
- 15 Amp Resistive @ 600 Vac
- 20 Amp Ballast @ 277-480 Vac

Not rated for Electronic Ballast

- 770 VA Pilot Duty @ 120 Vac
- 1158 VA Pilot Duty @ 240 Vac
- 1110 VA Pilot Duty @ 277 Vac
- 1640 VA Pilot Duty @ 480 Vac
- 3 HP @ 480-600 Vac
- 2 HP @ 240-277 Vac
- 1 HP @ 120 Vac

Power Input Ratings:

- 105 mA @ 120 Vac (RIBTE01P-S)
- 105 mA @ 208-277 Vac (RIBTE02P-S)

Control Input Ratings:

- .4 mA @ 5 Vdc
- .9 mA @ 10 Vdc
- 1 mA @ 12 Vdc
- 2 mA @ 24 Vdc
- 3 mA @ 24 Vac (Non Polarized)

Notes: Override capability is made possible by supplying constant voltage on the Power Input. No Control Input Voltage is necessary to override the relay.*