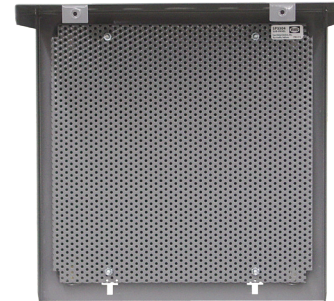
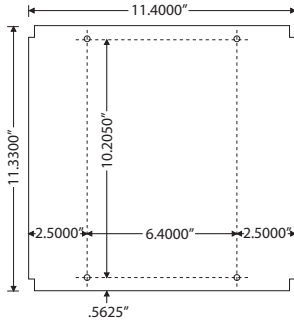


SUB-PANEL

SP3304

Perforated Steel Sub-Panel, 11.33" H x 11.40" W x 0.25" Thick, For use with MH3300 or MH3300K



SPECIFICATIONS

Mounting Area: 129.16" square
Approvals: Plenum Rated
Origin: Made of US and non-US parts

Enclosure Assemblies: MH3304
MH3300 Enclosure with SP3304
Sub-Panel pre-mounted

MH3304K
MH3300K Enclosure with SP3304
Sub-Panel pre-mounted