

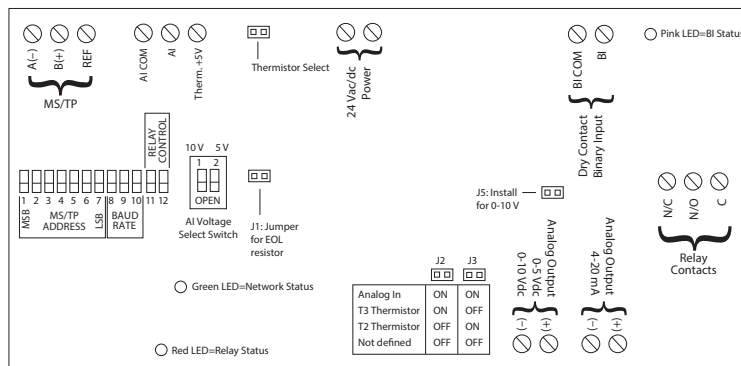
Analog Output

ASHRAE BACnet™ Network Device



Designed for I/O Applications

Valve • Actuator • Damper • VFD • Pump Fan



Fan Control
Binary Output
(20 Amp Relay)

Fan Status
Binary Input
(Dry Contact)

Damper Control
Analog Output
(0-5 Vdc, 0-10 Vdc)
(4-20 mA loop)

Temperature Input
Analog Input
(Thermistor)



(shown without cover)

Features:

- BACnet® MS/TP network
- One binary output: 20 Amp SPDT + override
- One binary input: Dry contact
- Analog outputs: Choose between voltage or current
- One analog input: Thermistor
- 24 Vac/dc power
- NEMA 1 enclosure
- UL Listed
- Made in the USA
- Model # RIBTW24B-BCAO

